



Homo Cognitivus

présente ...

Banque de stimuli

centrés pour exercices mnésiques, attentionnels, et autres ..., à l'usage exclusif et averti des Macintosheurs PsychLabiens Cognitivo-Camo-Sartro-Althussériens de tendance néo-Seronisto-Baddeleyrienne, obéissance analo-Bretonienne, courant Kantien de la troisième décade Lacano-Marxo-dimensionnelle, formulaire 1356 ter, alinéa 70489, en haut, à gauche en partant de la droite, bureau 32147, 68^{ième} étage, au fond du couloir de la Grande Cosmatricule Lactée de l'Immense

TOUT.

Introduction

Le présent matériel comporte, dans la version qui a été finalisée en 1991, 900 stimuli de format MacPaint, centrés en vue de leur présentation via le logiciel PsychLab v.085 (Teren Gum, Montreal Neurological Institute, Canada, 1988 ©). Il se destine principalement à la rééducation des troubles attentionnels, mnésiques, etc.

Construit sur un Macintosh SE FDHD à l'aide du logiciel SuperPaint 2.0 (Silicon Beach Software), il peut servir de base à des exercices de type comparaison de figures, empan visuel, mémoire visuelle, etc.

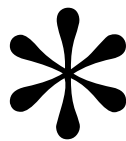
Il se compose de 500 stimuli de petit format (45x45 pixels), et de 400 stimuli de grand format (105x105 pixels).

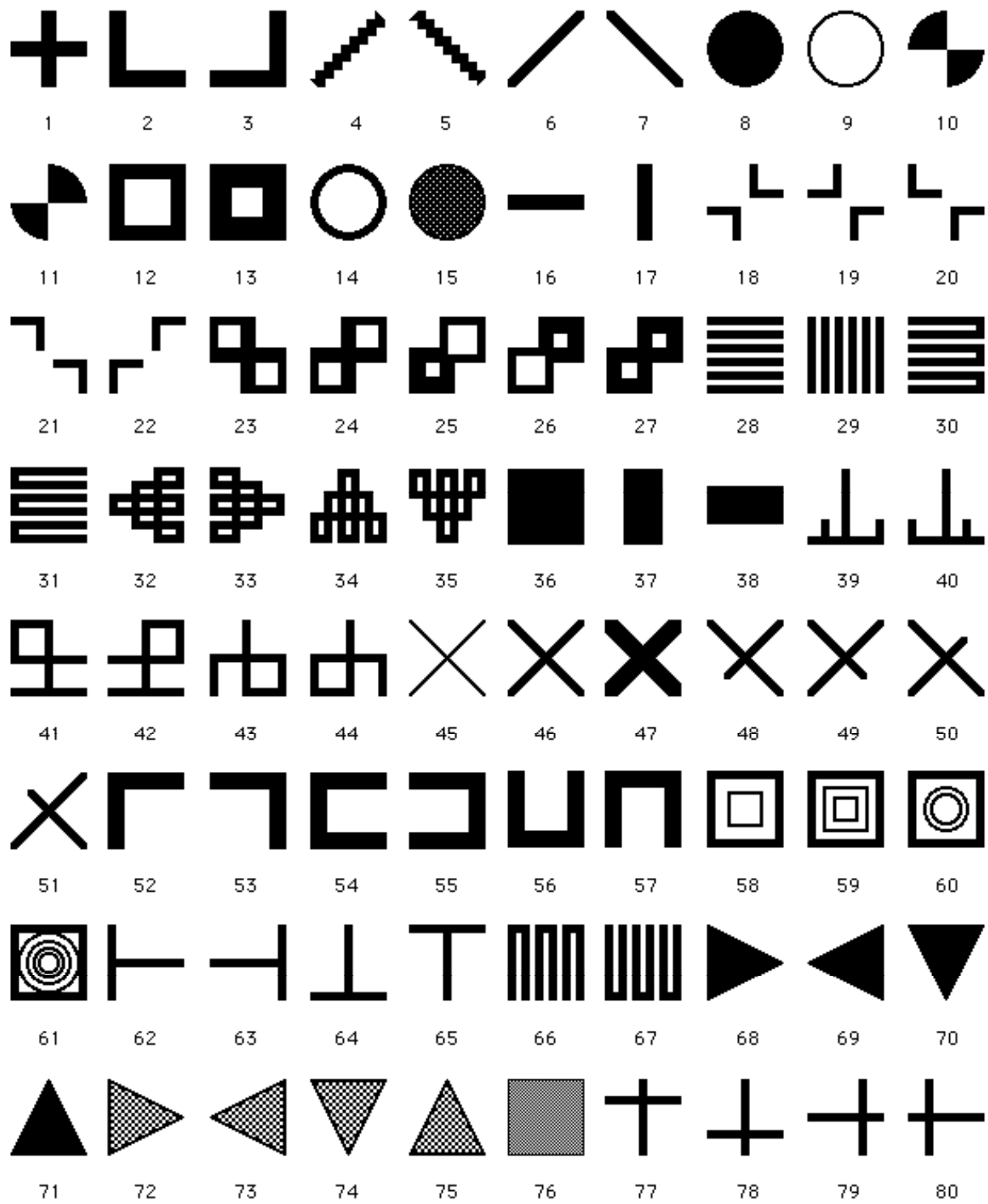
Les premiers diffèrent entre eux principalement par la forme, la complexité, l'orientation, et la « couleur » (noir, blanc, gris, ainsi que les différents patterns proposés par le logiciel).

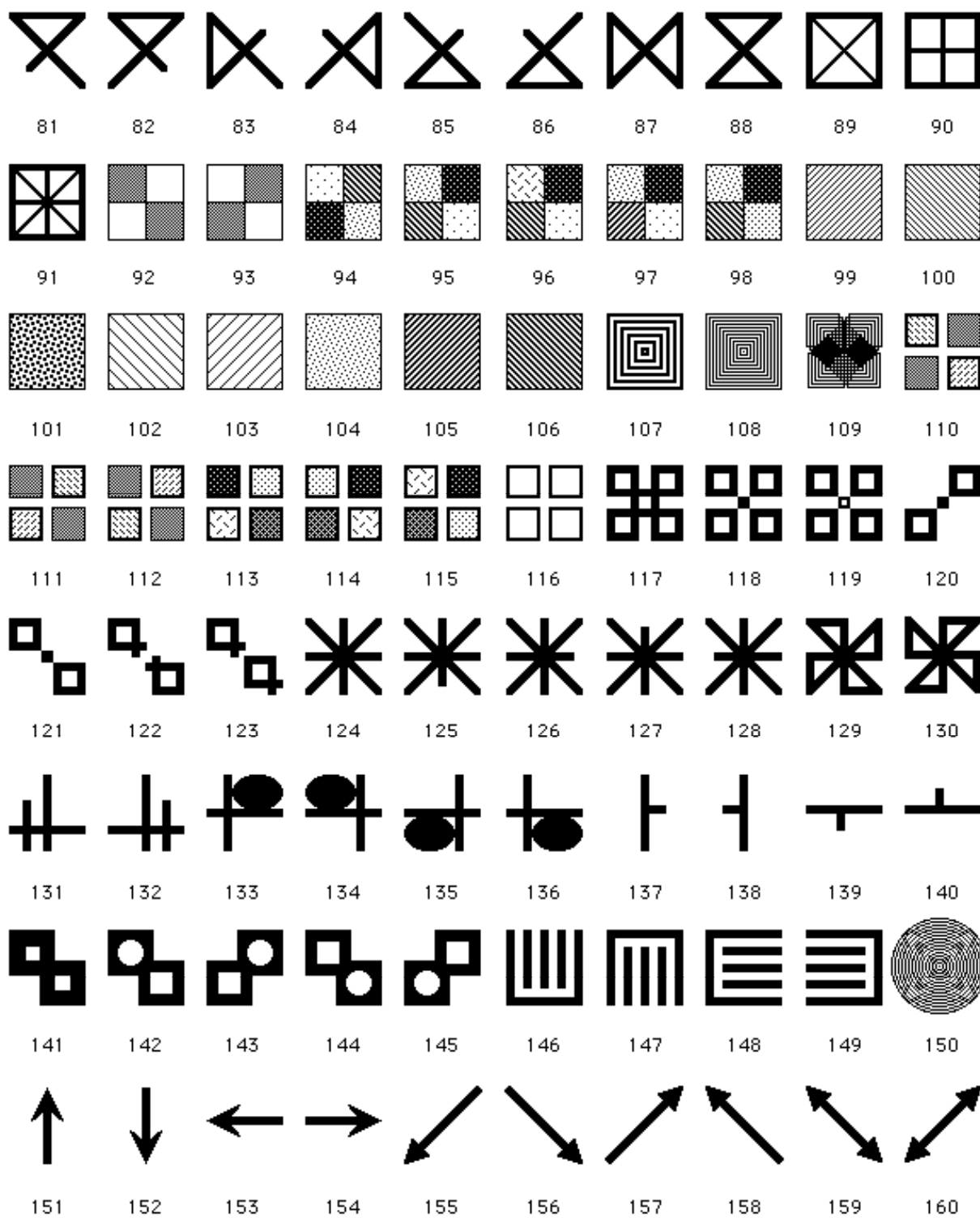
Les stimuli 401 à 500 sont conçus comme une transition vers les stimuli plus complexes que sont les éléments de grand format.

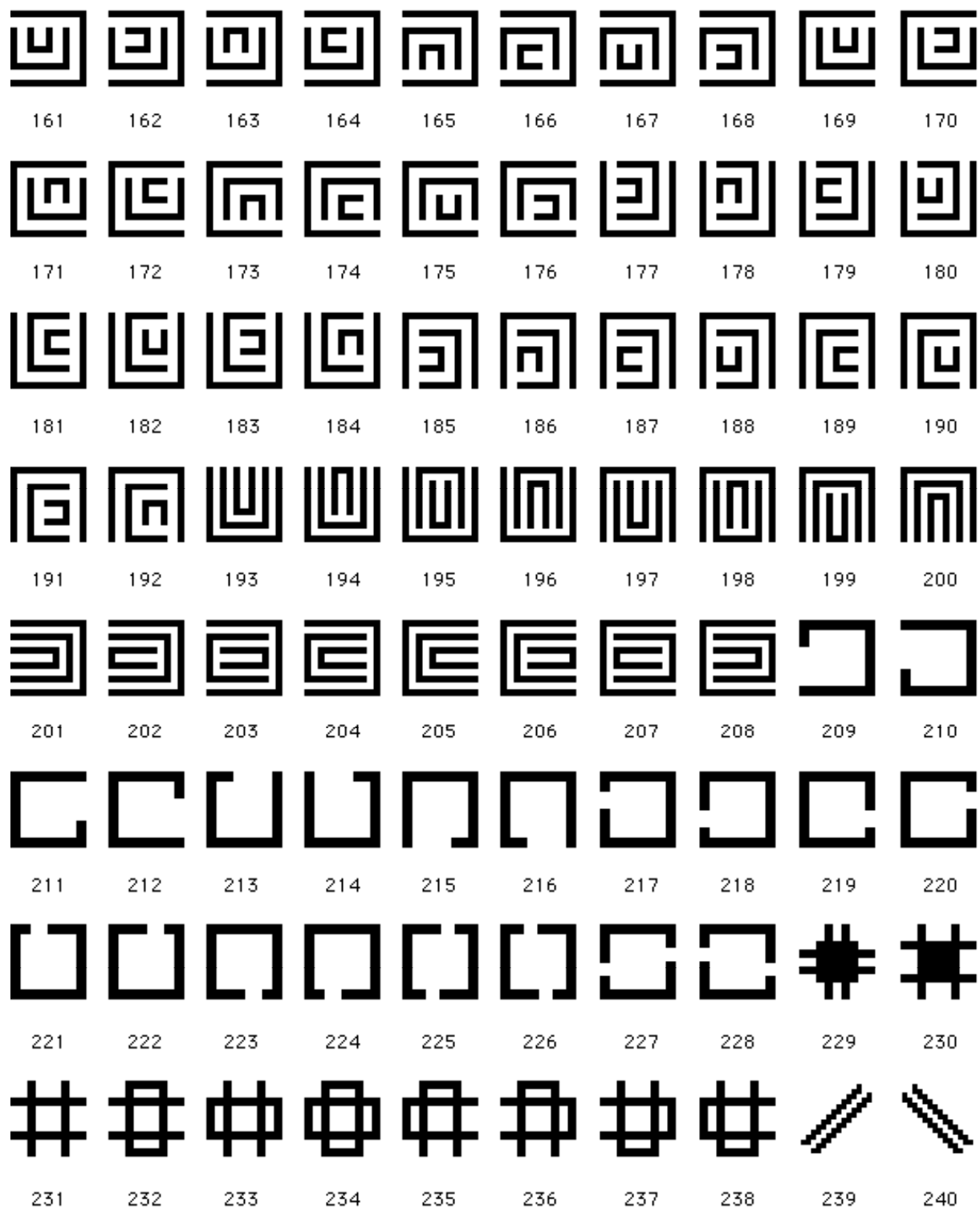
Ces derniers s'organisent en 38 séries, comportant, pour la plupart d'entre elles, 10 items. Le premier de ceux-ci est un item générique à partir duquel ont été dérivés les autres. Les modifications consistent surtout en additions, soustractions, inversions, ou déplacements d'éléments constitutifs. Au sein d'une même série, elles portent successivement sur chaque partie de l'item générique (à partir du coin supérieur droit, et en tournant dans le sens des aiguilles d'une montre).

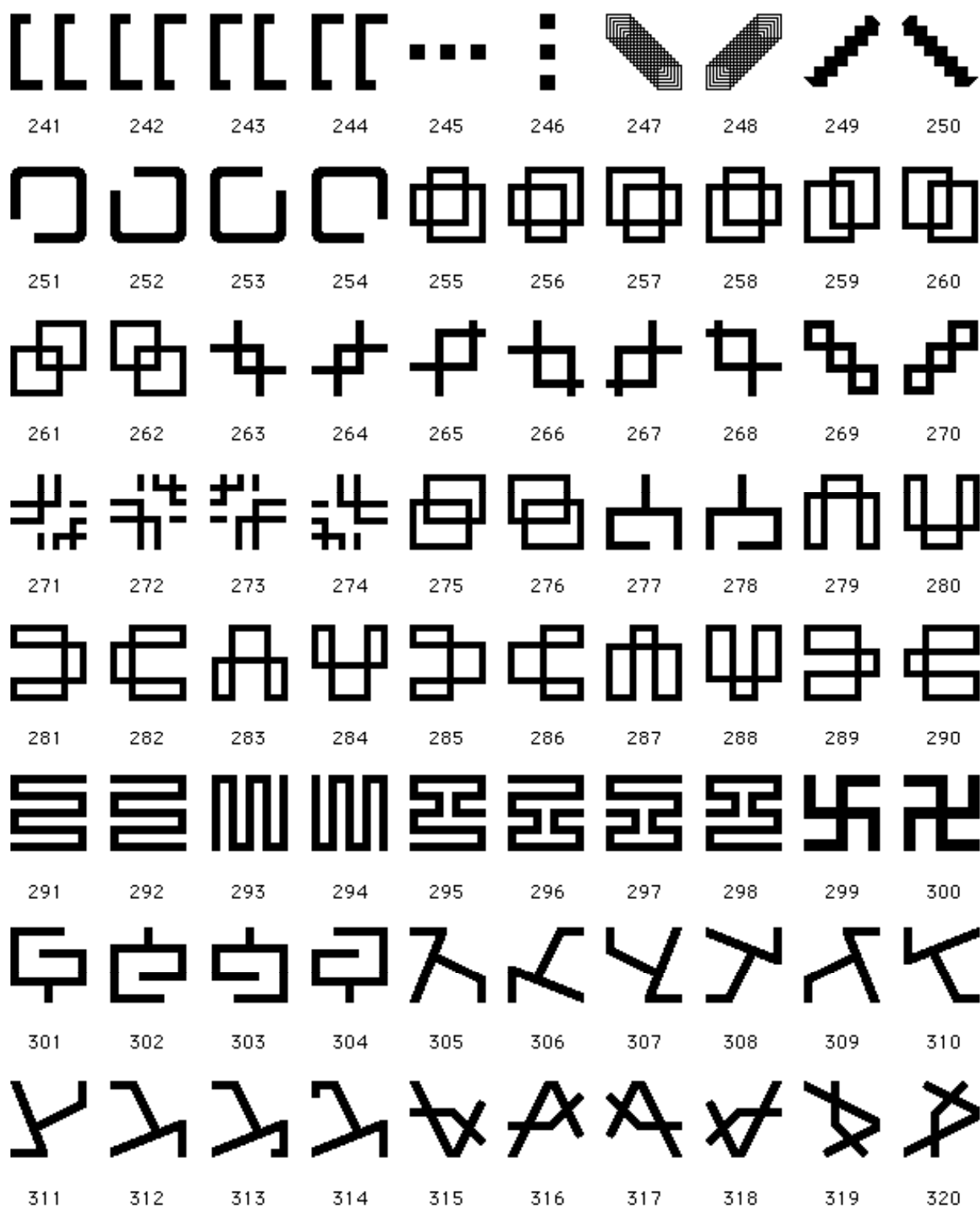
Il est naturellement possible à l'utilisateur disposant d'un programme de dessin adapté, de créer ses propres stimuli sur le modèle de ceux proposés ci-après.





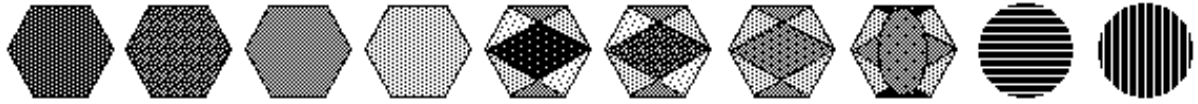




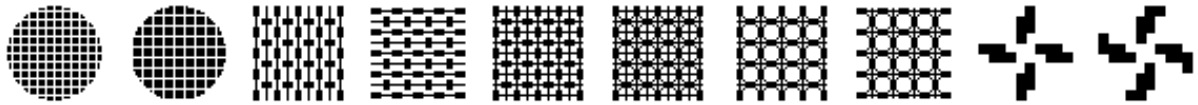




321 322 323 324 325 326 327 328 329 330



331 332 333 334 335 336 337 338 339 340



341 342 343 344 345 346 347 348 349 350



351 352 353 354 355 356 357 358 359 360



361 362 363 364 365 366 367 368 369 370



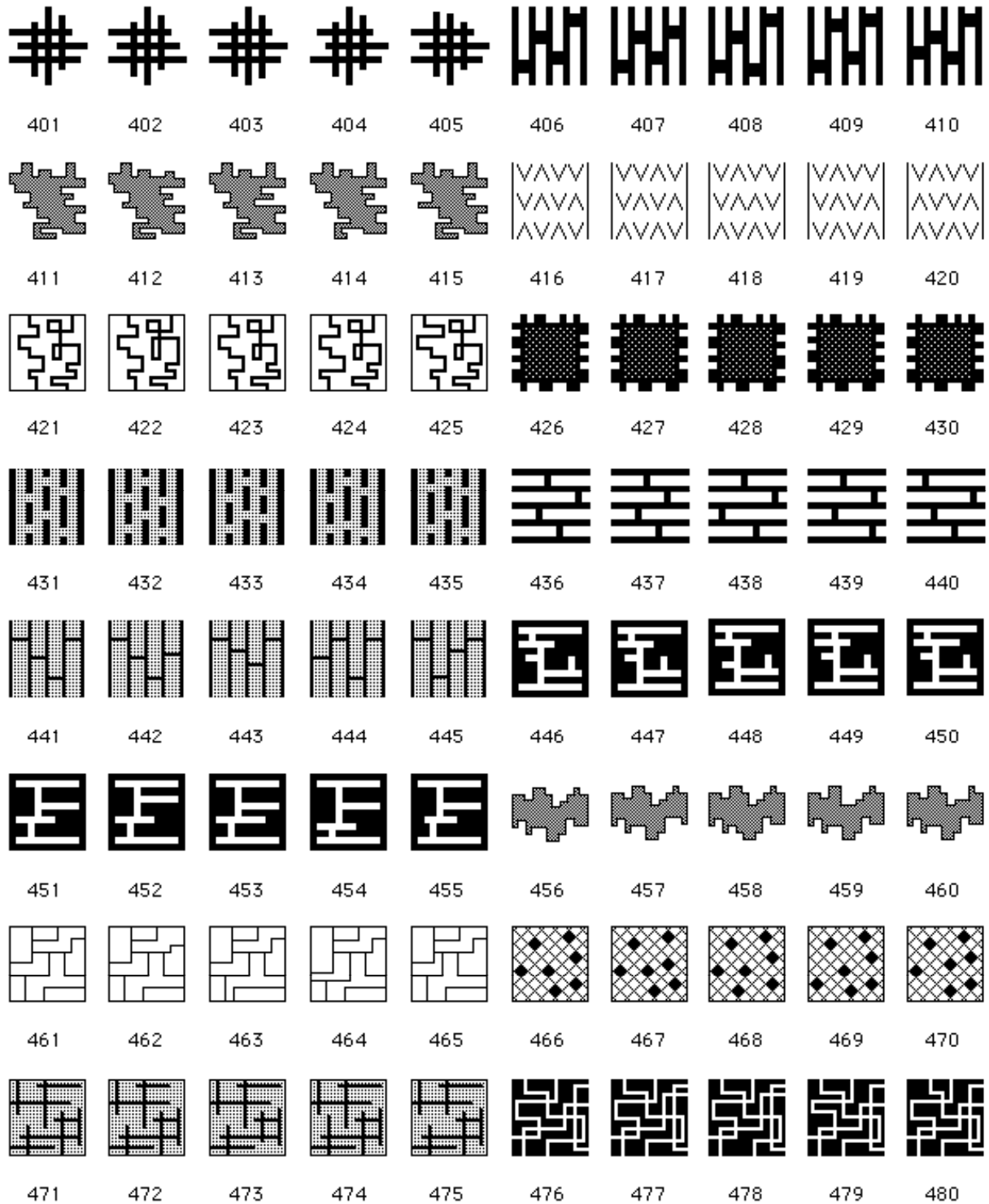
371 372 373 374 375 376 377 378 379 380



381 382 383 384 385 386 387 388 389 390



391 392 393 394 395 396 397 398 399 400

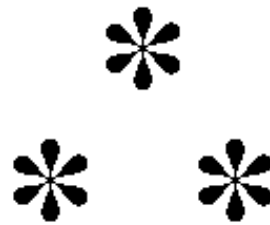


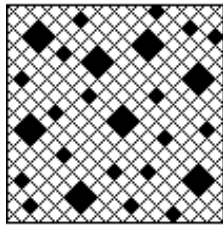


481 482 483 484 485 486 487 488 489 490

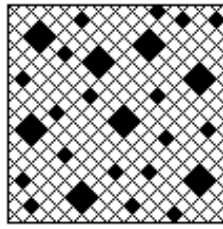


491 492 493 494 495 496 497 498 499 500

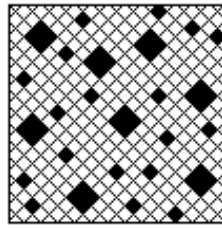




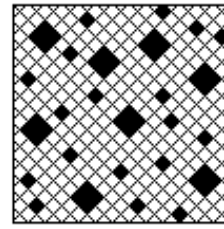
501



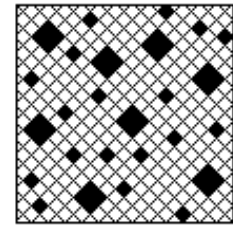
502



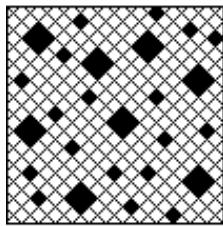
503



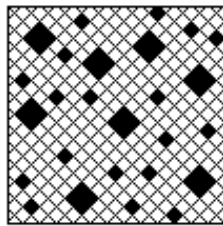
504



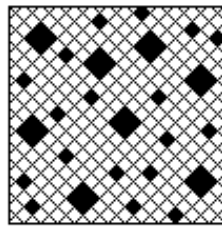
505



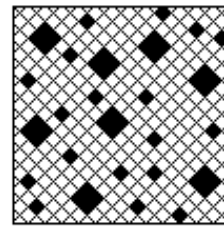
506



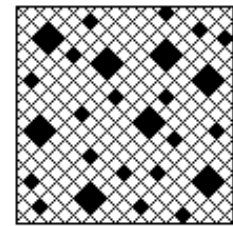
507



508



509



510

bbpddqpd
 ddbpddpd
 ppdbdpqd
 dbdpqdaqb

511

bbpddqqd
 ddbpddpd
 ppdbdpqd
 dbdpqdaqb

512

bbpddqpd
 ddbpbdpd
 ppdbdpqd
 dbdpqdaqb

513

bbpddqpd
 ddbpddpd
 ppdbdpqd
 dbdpqdaqb

514

bbpddqpd
 ddbpddpd
 ppdbdpqd
 ddbpdaqb

515

bbpddqpd
 ddbpddpd
 pqdbdpqd
 dbdpqdaqb

516

bbpddqpd
 ddbpddpd
 ppbddpqa
 dbdpqdaqb

517

bbpddqpd
 dbdpddpd
 ppdbdpqa
 dbdpqdaqb

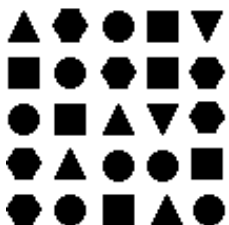
518

bbqddqpd
 ddbpddpd
 ppdbdpqa
 dbdpqdaqb

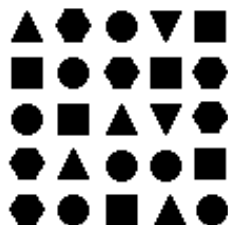
519

bbpddqpd
 ddbpddpd
 ppdbdpqa
 dbdpqdaqb

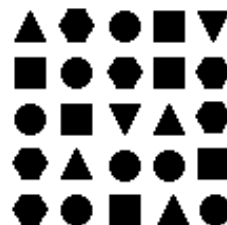
520



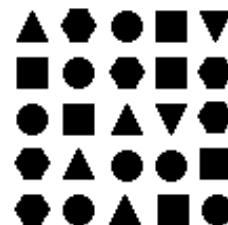
521



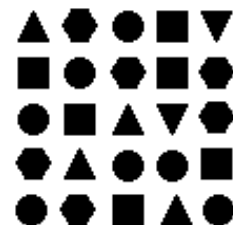
522



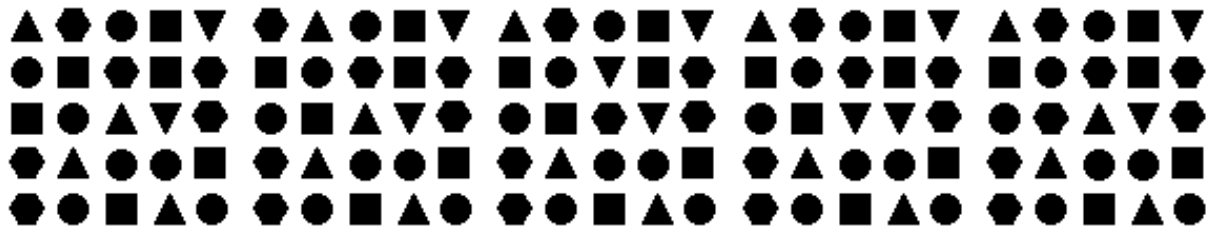
523



524



525



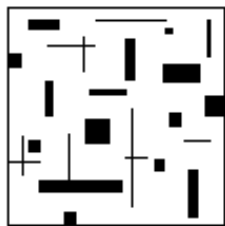
526

527

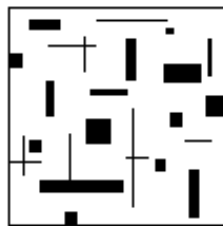
528

529

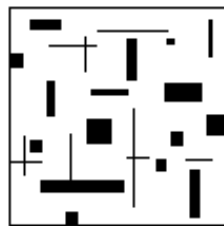
530



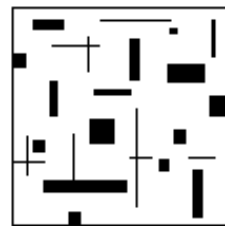
531



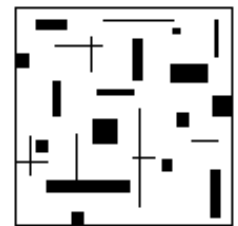
532



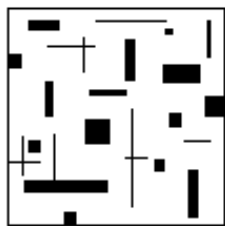
533



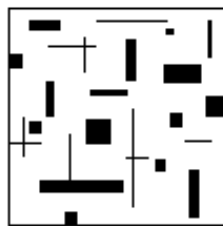
534



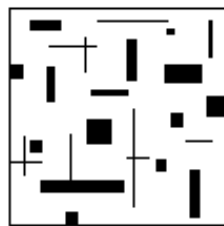
535



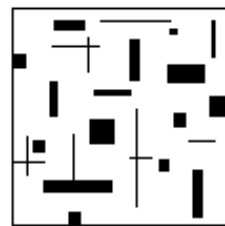
536



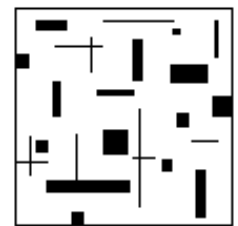
537



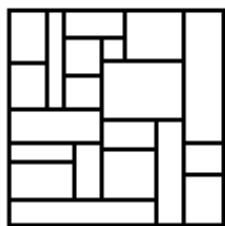
538



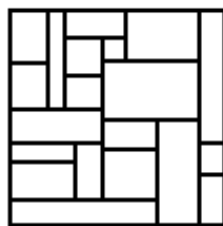
539



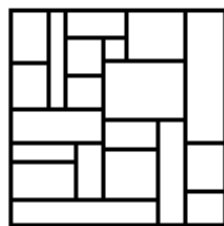
540



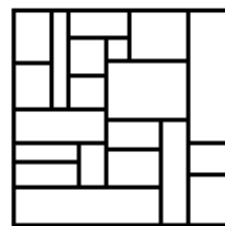
541



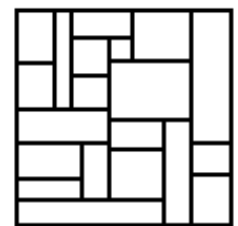
542



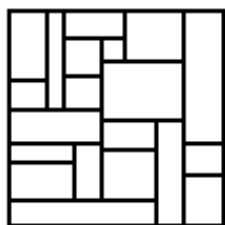
543



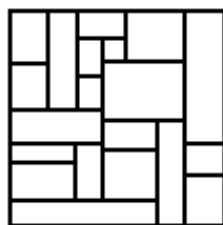
544



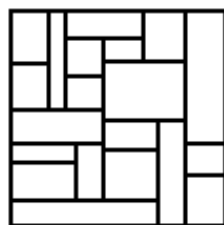
545



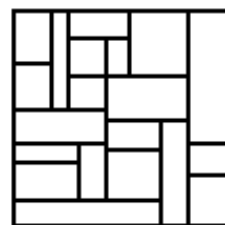
546



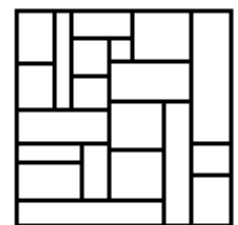
547



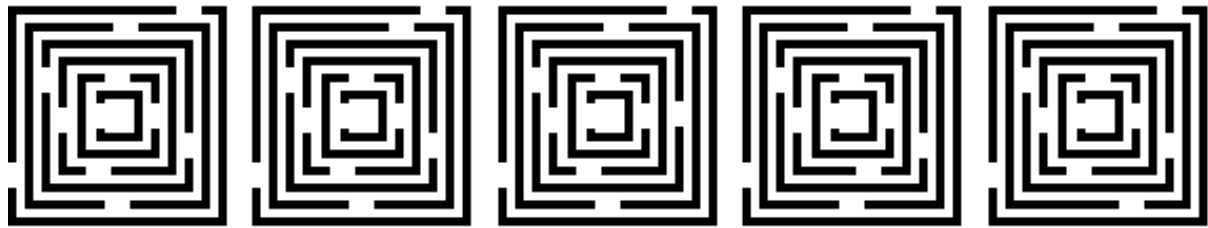
548



549



550



576

577

578

579

580



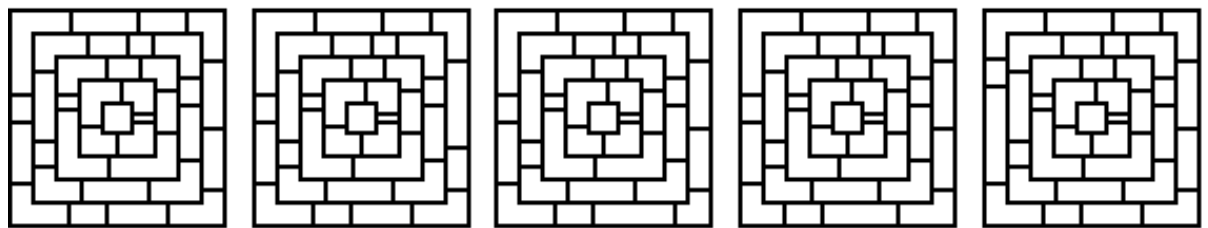
581

582

583

584

585



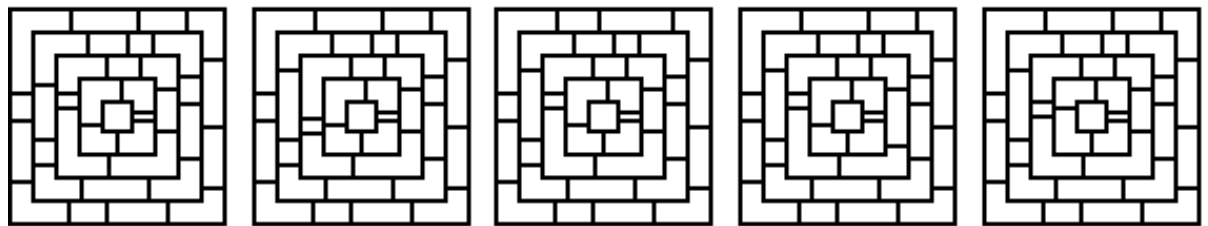
586

587

588

589

590



591

592

593

594

595



596

597

598

599

600



601

602

603

604

605



606

607

608

609

610



611

612

613

614

615



616

617

618

619

620



621

622

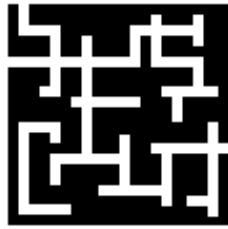
623

624

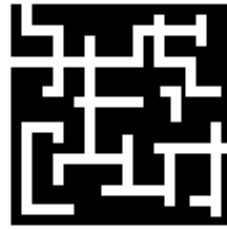
625



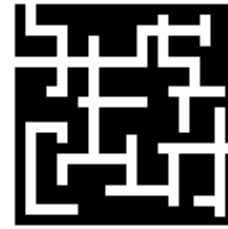
626



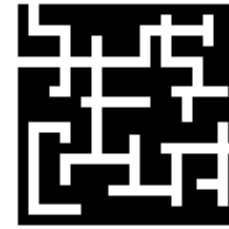
627



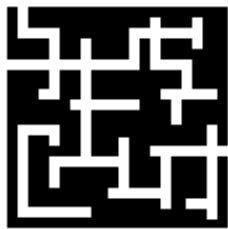
628



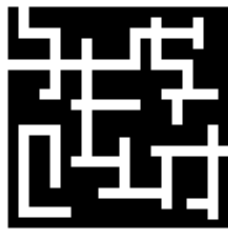
629



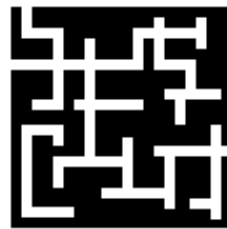
630



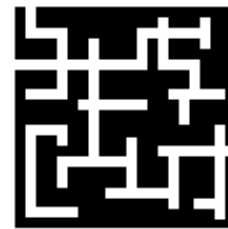
631



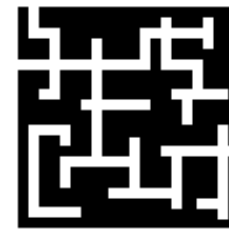
632



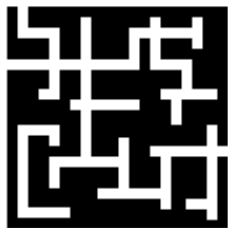
633



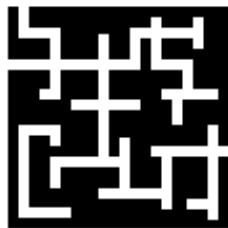
634



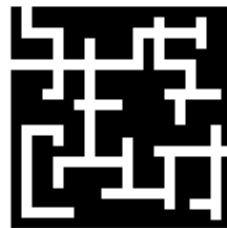
635



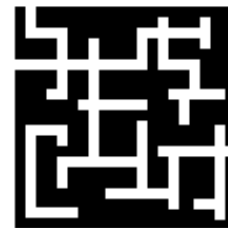
636



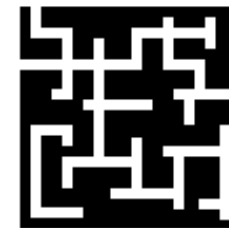
637



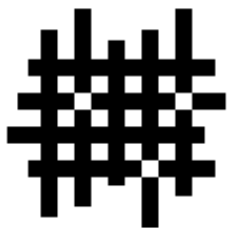
638



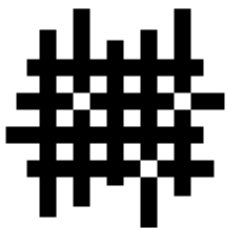
639



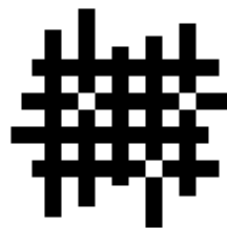
640



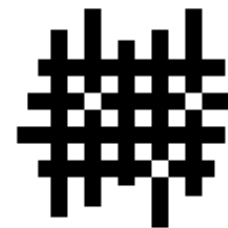
641



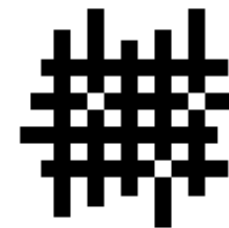
642



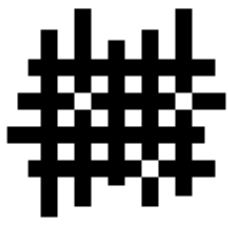
643



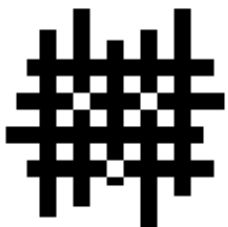
644



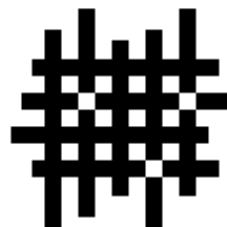
645



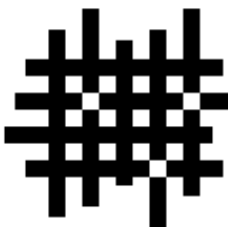
646



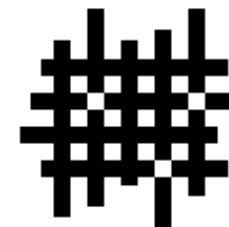
647



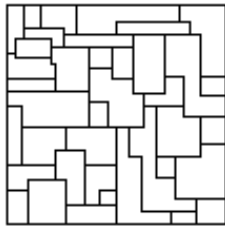
648



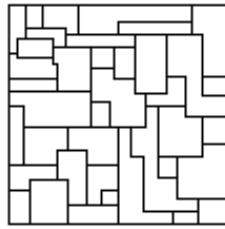
649



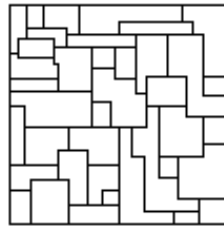
650



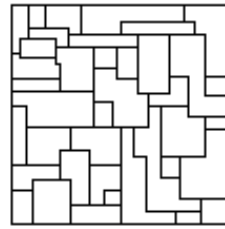
651



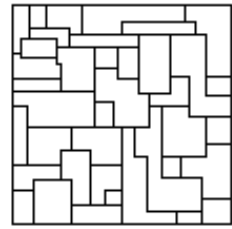
652



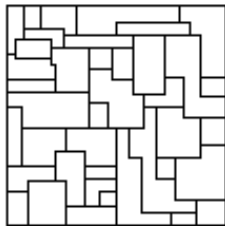
653



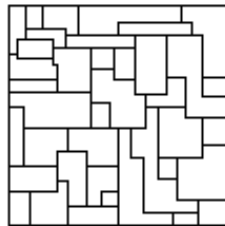
654



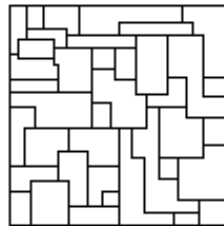
655



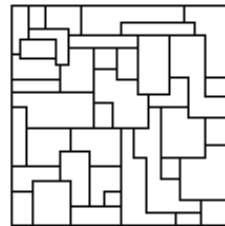
656



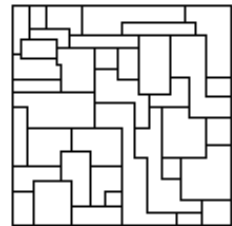
657



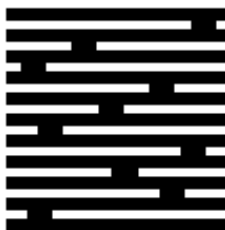
658



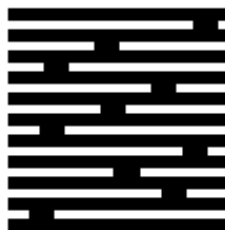
659



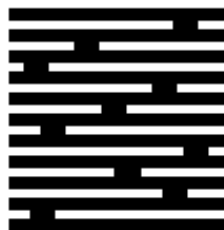
660



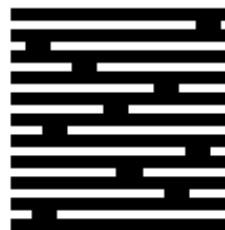
661



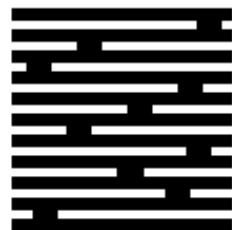
662



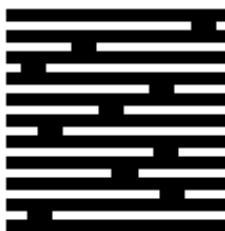
663



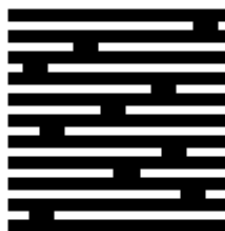
664



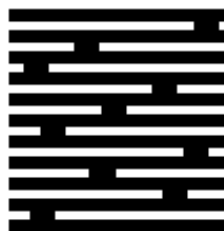
665



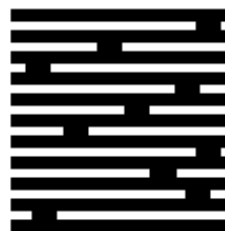
666



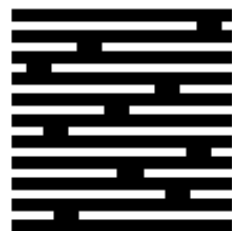
667



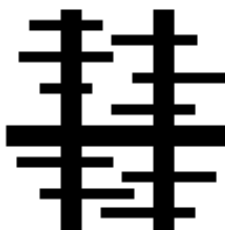
668



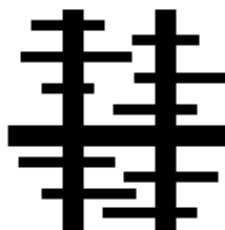
669



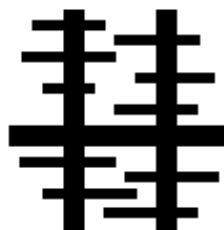
670



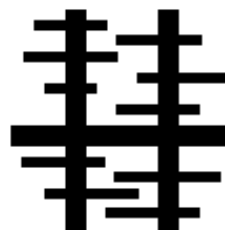
671



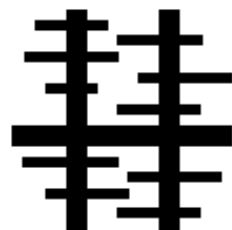
672



673



674



675



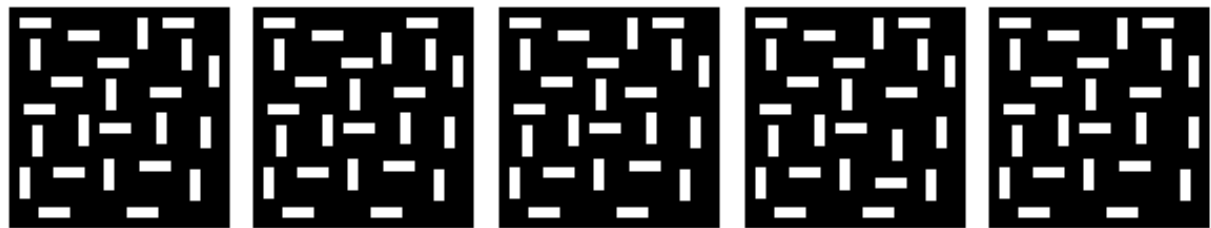
676

677

678

679

680



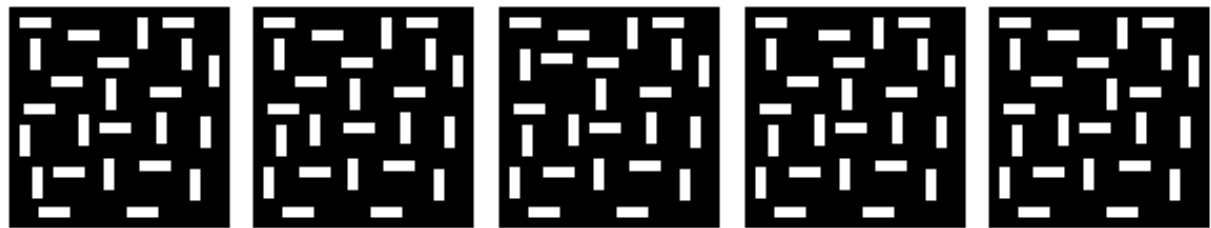
681

682

683

684

685



686

687

688

689

690



691

692

693

694

695



696

697

698

699

700



701

702

703

704

705



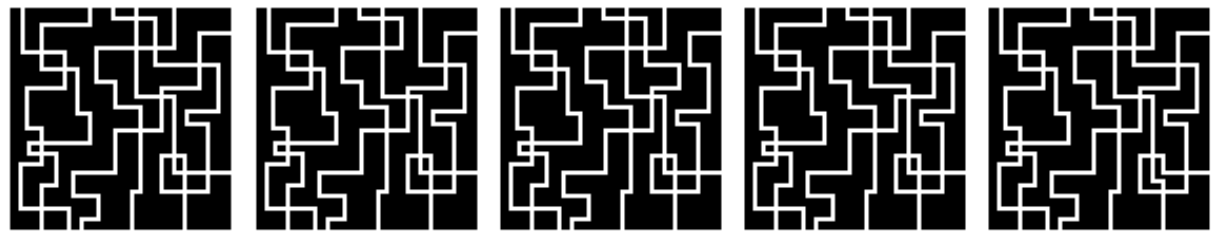
706

707

708

709

710



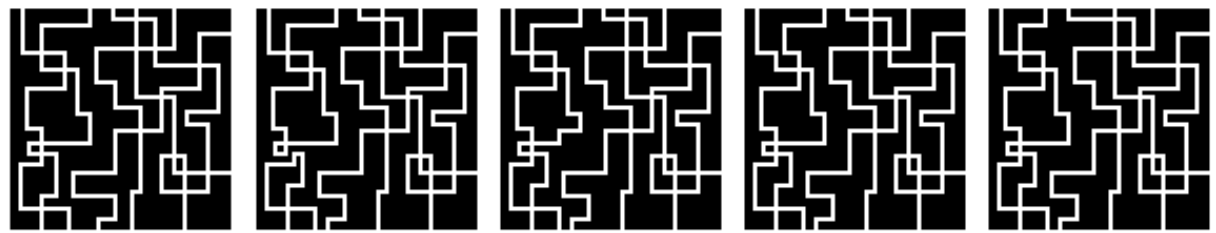
711

712

713

714

715



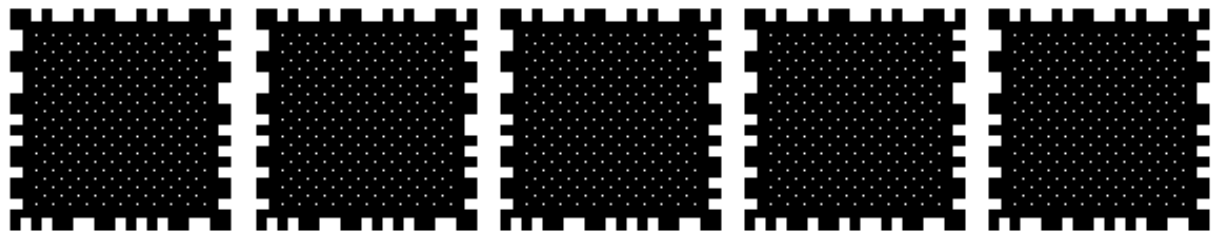
716

717

718

719

720



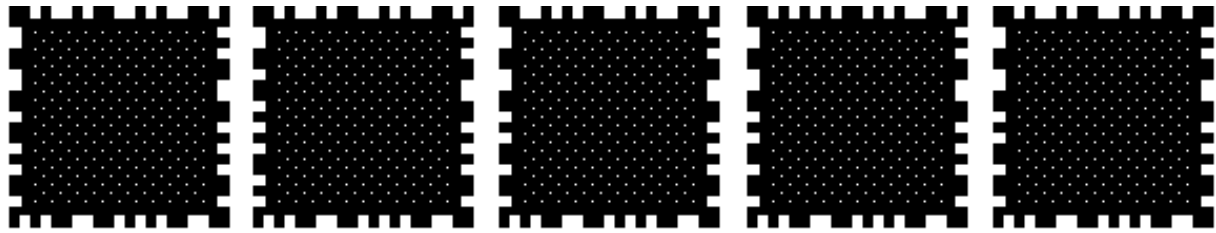
721

722

723

724

725



726

727

728

729

730



731

732

733

734

735



736

737

738

739

740



741

742

743

744

745



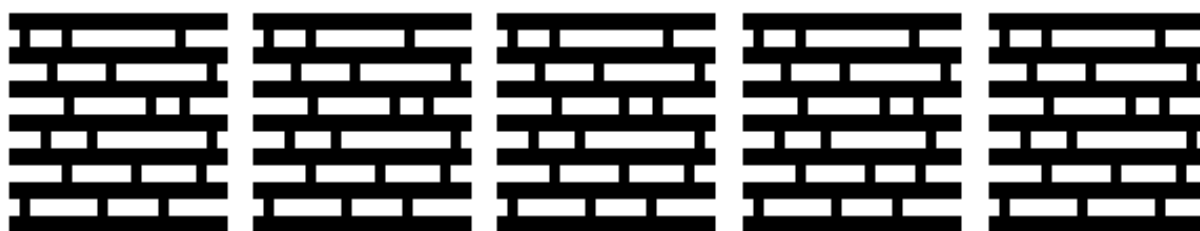
746

747

748

749

750



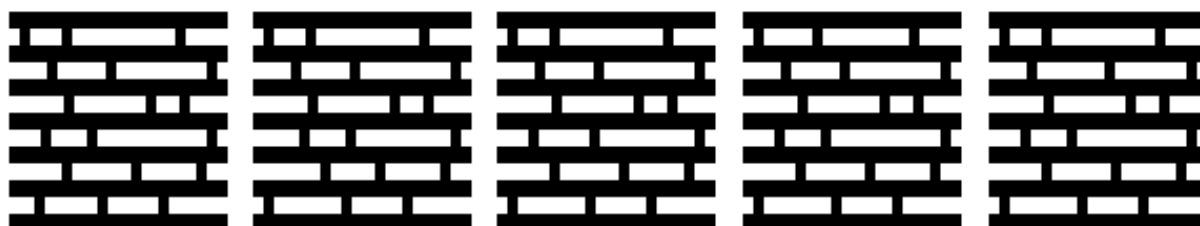
751

752

753

754

755



756

757

758

759

760



761

762

763

764

765



766

767

768

769

770



771

772

773

774

775



776

777

778

779

780



781

782

783

784

785



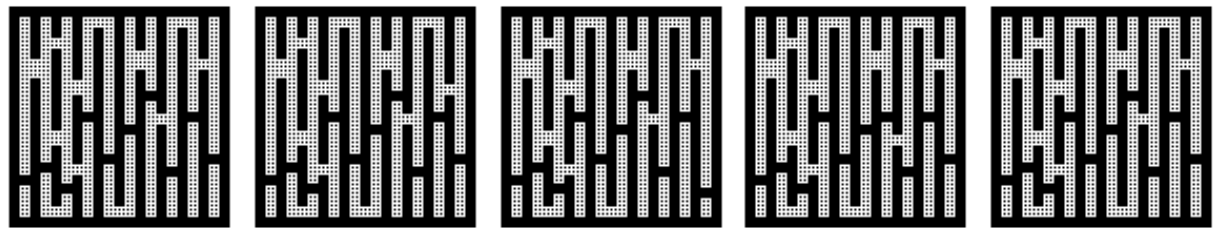
786

787

788

789

790



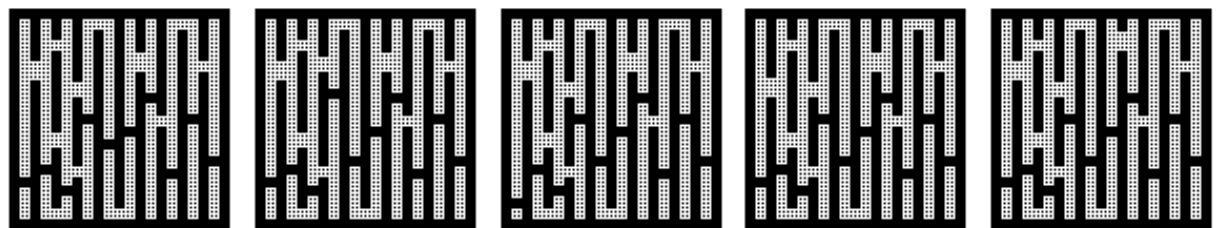
791

792

793

794

795



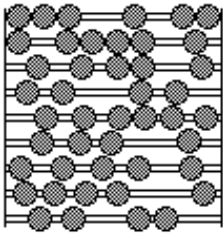
796

797

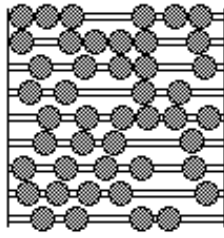
798

799

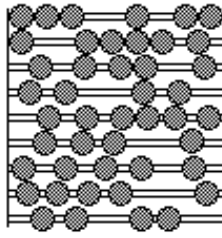
800



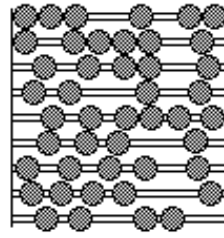
801



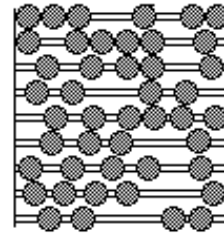
802



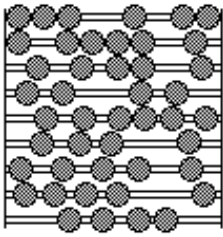
803



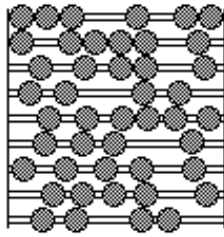
804



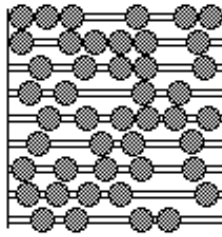
805



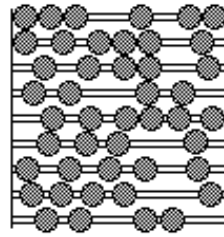
806



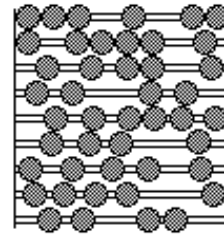
807



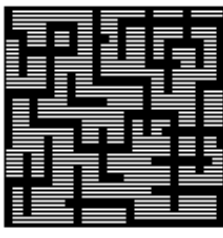
808



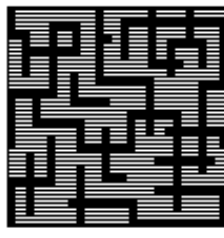
809



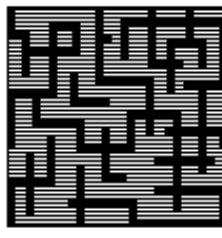
810



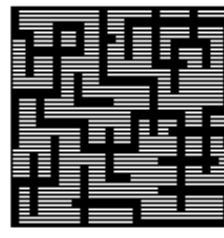
811



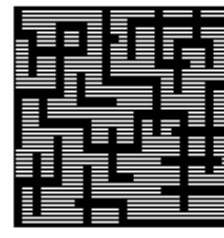
812



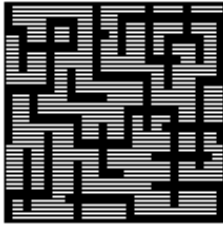
813



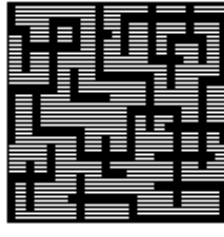
814



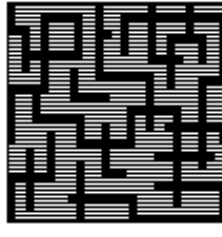
815



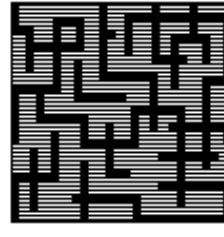
816



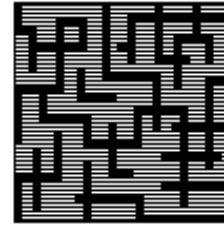
817



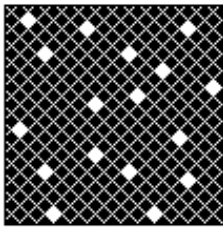
818



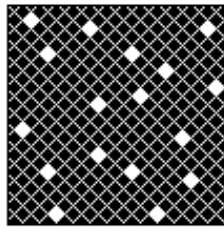
819



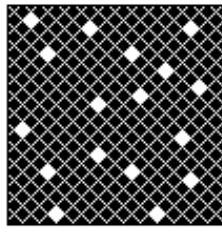
820



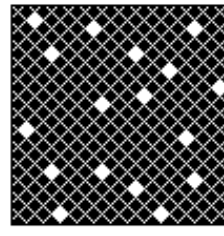
821



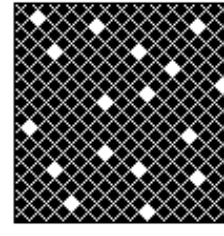
822



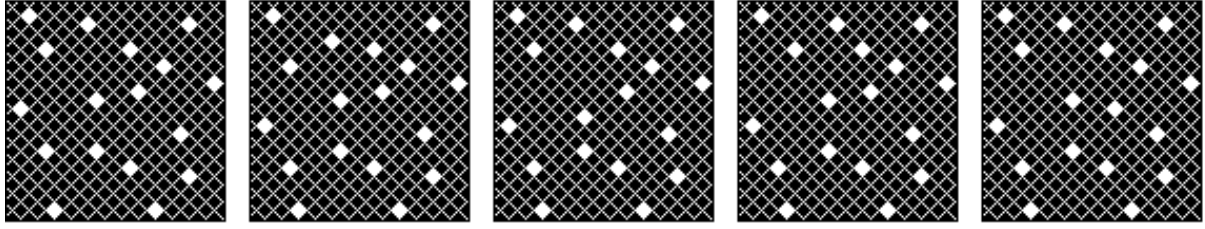
823



824



825



826

827

828

829

830



831

832

833

834

835



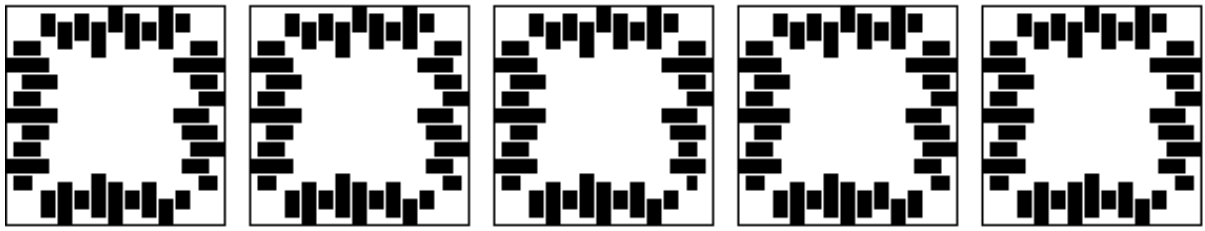
836

837

838

839

840



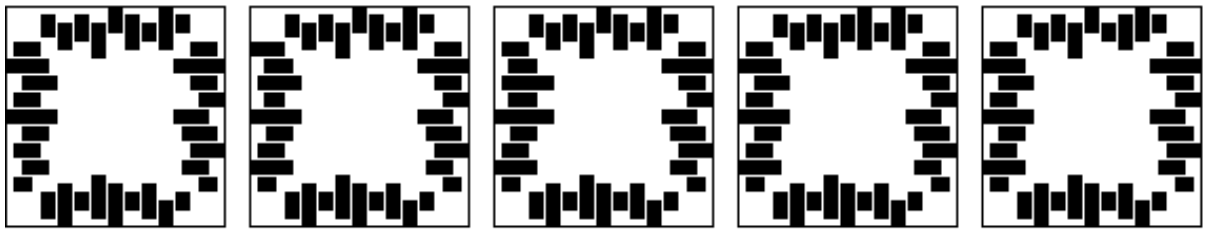
841

842

843

844

845



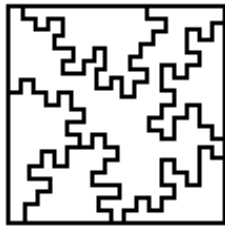
846

847

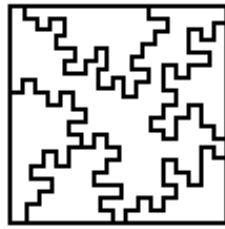
848

849

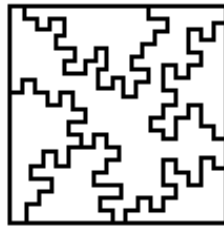
850



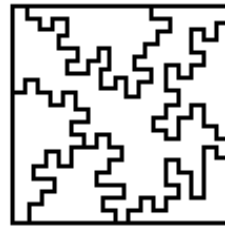
851



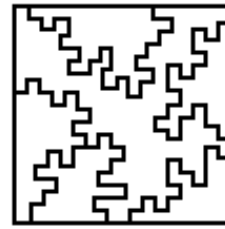
852



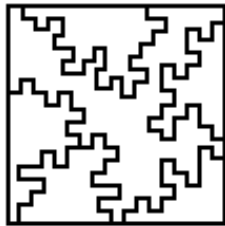
853



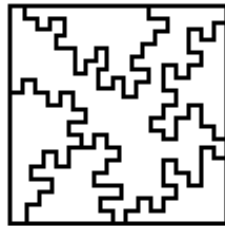
854



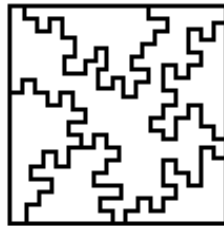
855



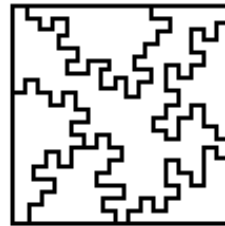
856



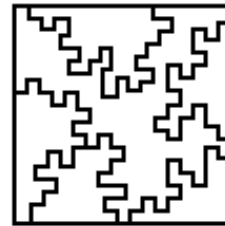
857



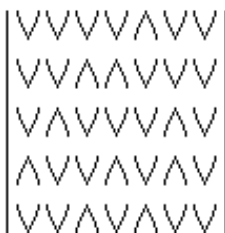
858



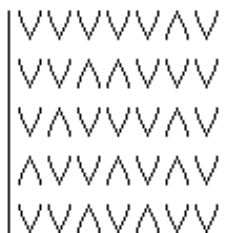
859



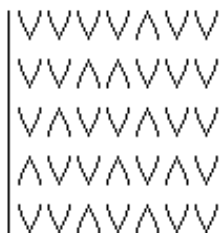
860



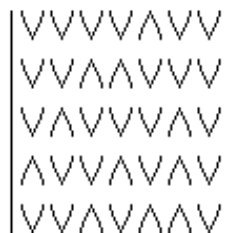
861



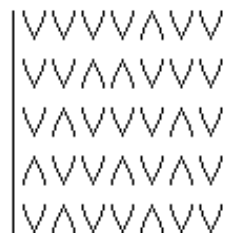
862



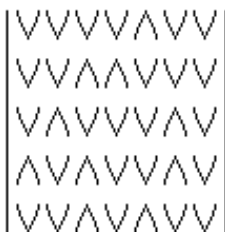
863



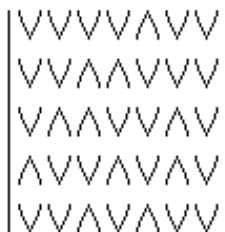
864



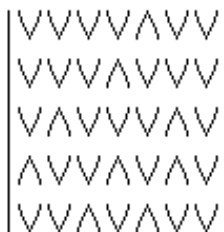
865



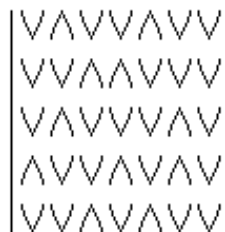
866



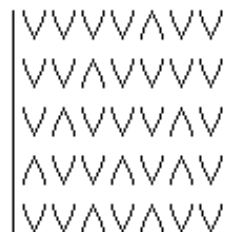
867



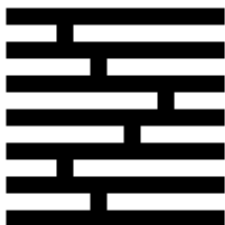
868



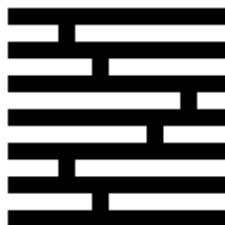
869



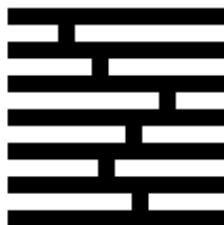
870



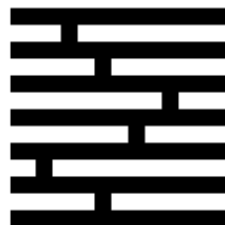
871



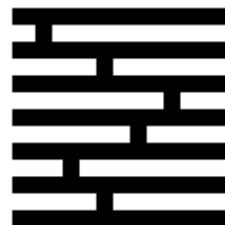
872



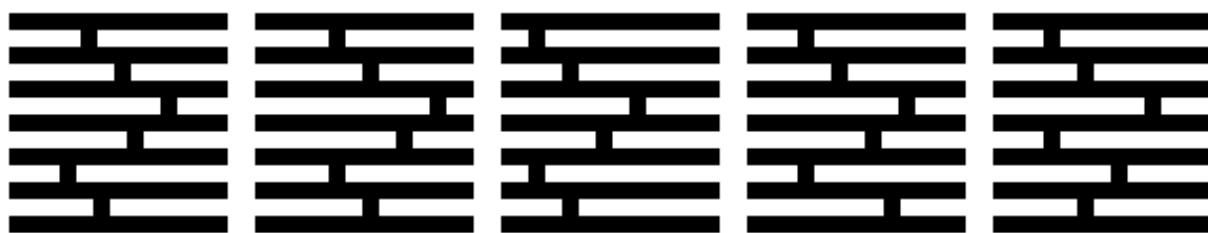
873



874



875



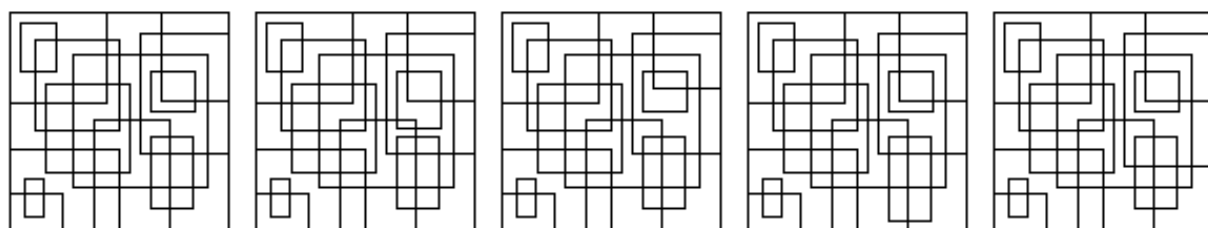
876

877

878

879

880



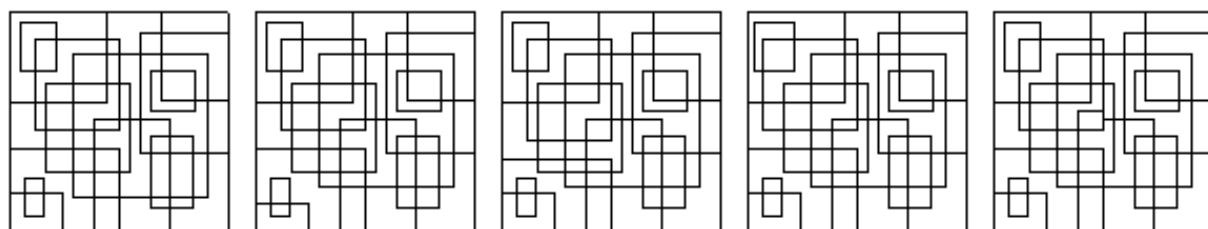
881

882

883

884

885



886

887

888

889

890



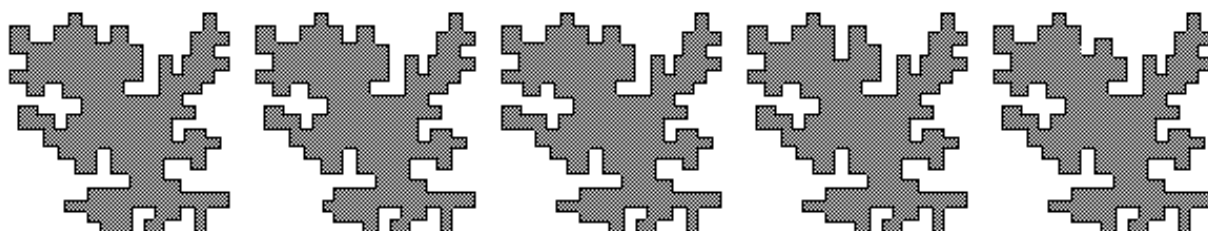
891

892

893

894

895



896

897

898

899

900